

MICKLEHAM PARISH Magazine

A community magazine for Mickleham and Westhumble



A.N. Colwell 1984

September 2024



**SURREY HILLS
HEATING LTD**

**DOMESTIC BOILER SERVICING
AND BREAKDOWN**

OIL, LPG & GAS BOILERS

Call Dathan on: 07944 575970
sales@surreyhillsheating.co.uk
www.surreyhillsheating.co.uk



Bullimores



Accountants for Life
Tax • Accounts • Probate
Inheritance Tax &
Executorship

T: 01306 880880
E: partners@bullimores.co.uk
W: www.bullimores.co.uk

Bullimores LLP licensed to carry out the reserved legal activity of non-contentious probate in England & Wales by the ICAEW

MICKLEHAM PARISH Magazine

September
2024

Mickleham
Parish
Magazine

Mickleham Rectory

Dear friends

I enjoyed watching the Olympics. It is great to watch the variety of sports, some we wouldn't normally see, and admire the skills, strength and speed of competitors. The games were not without controversy. The opening ceremony was very different taking place outside the arena and involving much that was about Paris and France. Then the Olympic aspirations were read out. They mention building a peaceful and better world through the values of excellence, respect and friendship but there were times when these aims seemed at odds with proceedings. This included the opening ceremony where there appeared to be an awful parody of the Last Supper, which was insulting to many Christians. The designer denied that it was a cameo of the Last Supper and claimed he intended to convey community tolerance by including a diverse group of people. Respect for all faiths and cultures is needed for tolerance to be achievable. The teaching of Jesus that we should treat others as we wish to be treated is so important in guiding our behaviour. Interestingly, the beliefs of athletes have been respected by the media who published stories about the way faith has helped athletes including swimmer Adam Peaty.

I am not sure of the lasting impact of the Olympics, but it was clearly a display of excellence and unity which was enjoyed around the world. The competitors had opportunities beyond sport to meet and befriend others in the community of their village, which I'm sure impacted them. Sadly, the UK was shocked by the dreadful murder of three children and injuries to others, followed by rioting. This displayed the very opposite of what the Olympics stand for and the teaching of Jesus, but how heartening that there were peaceful anti-violence and anti-racism demonstrations. There were far more wanting peaceful and tolerant communities than there were violent anti-immigration supporters. Everyone can contribute to the common good.

Our community events are an important aspect of living well together. Thank you very much to all who contributed or supported the Village Summer Fair, which despite some rain successfully enabled people to have fun, meet and enjoy each other's company. It raised over £4700 which will be divided between Mickleham Playground, Nursery, Infant School and Church Clock Appeal. Jesus also taught us to love others as we love ourselves. Our community enacts this by working together to create social events, treating others with respect and caring for those in need. The church aims to help promote this attitude and so we are organising a community Harvest Supper on 5th October. Do look out for the details on page 3. The following day is our Harvest Service when we give thanks to God for his good gifts to us and we share what we have with those who have much less. This year we will be focussing on the food bank, finding out more about it and giving money and food items. Let's continue to work together for the good of others.

God Bless.

Sandra

The Rev'd Dr Sandra Faccini, Parish Priest

Curious about Christian faith or want to explore more about it? I will be running an Alpha course on Monday evenings 7pm from 8th October. Please ask me for more details. Thanks, Sandra

A community magazine for Mickleham and Westhumble published under the auspices of Mickleham PCC with an independent editorial panel. The magazine is published at the beginning of each month except January and August.

COPY DEADLINE

OCTOBER MAGAZINE
Sunday
8th September

send to:
editor@micklehammag.co.uk

Co-editors

Charlotte Daruwalla
07933 300744
Jan Budleigh
07780 976301

Contributions in any form are welcome as are good quality photographs. There is no charge for advertising local charity and community events. However the editors reserve the right to shorten omit or reformat articles submitted for publication depending on space.



Printed by Holbrooks Printers
Portsmouth



Stepping Stones

MORE THAN JUST A PUB

CAFÉ-BAR

Serving Morning Coffee and Afternoon Teas

RESTAURANT & ALFRESCO DINING

Serving fresh classic-style pub favourites

Live music events Take-aways available

Available for functions / private parties / celebrations / family gatherings

Dog friendly

Last Monday night of the
month from 7.30 pm

01306 889932
steppingstonespub@gmail.com
www.steppingstonesdorking.co.uk

*Please check website for up-to-date menus
events and current opening times*

SHERLOCK
FUNERAL SERVICE

EST. 1888



Sixth Generation Family Business

24-hour Service, Funeral Plans, Free Advice on all Related Matters,

Free Parking On Site, Memorial Masonry

Trellis House, 190 South Street, Dorking, Surrey, RH4 2ES

01306 882266

office@sherlockandsons.co.uk

www.sherlockandsons.co.uk



St Michael's Church Services

10 am Sunday Services available on Zoom

Joining information for both Zoom and telephone users is available in Pews News Online each week. If you would like to join us by Zoom then contact Alison Wood for the codes or to ask her to include you on the emailing list for Pews News: admin@micklehamchurch.org.uk / phone 01372 376443. We hope as many of you as possible will be able to join us for worship. Please refer to Pews News Online for the latest information. If you missed any of the services or would like to revisit them all are available on the church YouTube channel: <https://youtube.com/channel/UCl4pbewCT91iZhcd0EjBlw>



Bible Study
 Monday Evening Group
 At Westhumble Chapel
 Contact Amanda Wadsworth
aewadsworth@hotmail.com
 Thursday Morning Group
 At Mickleham Village Hall
 Contact Alison Wood 01372 376443
alison.wood29@btinternet.com
ALL WELCOME TO EITHER GROUP

First Saturday of the month
Coffee Morning
 Westhumble Chapel
Saturday 7th September
 Come along between 10 am and noon
 Coffee and cake £2 Free drinks for children
 Everyone welcome
 For further information call
 Jonathan Blake 07787 126966

Tea @ 3
Monday 16th September
 Host Wendy Wyatt
 6, The Mount
 Fetcham
 If you can help with future events, please contact
 Julia at siberrman@btinternet.com
ALL WELCOME TRANSPORT AVAILABLE

At St Michael's Church
Tea and Cake
 for the last time
 this year
Sunday
22nd September
 3 - 5 pm

Social gatherings open to everyone
9-10 am at The Stepping Stones pub

<p>WOMEN'S BREAKFAST 3RD SATURDAY OF THE MONTH NEXT BREAKFAST 21ST SEPTEMBER Book with: Stephanie Randall srandall55@gmail.com</p>	<p>MEN'S BREAKFAST NORMALLY 4TH SATURDAY OF THE MONTH NEXT BREAKFAST 28TH SEPTEMBER Book with: Andy Diamond new email adiamond714@gmail.com</p>
---	---



The children in our church family are very important to the life of our church. To help children and their parents feel more welcome at our 10 am Communion Services we will be offering a crèche in the Ranmore Room during part of the service. The crèche will be available for parents and their children and will be set up by volunteers.

The first crèche will be held on 8th September
 More details will follow

We already have interest in both using the crèche and volunteering though we are still looking for more volunteers to give a hand on a rota basis and hope that with enough people it will provide a helpful service without too much work for those involved.

Please contact me on aewadsworth@hotmail.com or Catherine Diffey on 07790 473167 for more information or if you would like to make use of this service or are thinking about volunteering.

Amanda Wadsworth



HARVEST SUPPER
Mickleham Village Hall
Saturday 5th October
7 - 10 pm

Includes a wonderful meal from 51 Degrees North and a homemade dessert
 Pay bar and raffle on the night
 Guest speaker from Dorking Food Bank

For tickets and information contact Frances Presley on jasempres@gmail.com
 Tickets £15, under 18s £10
 Money raised going to The Foodbank and The Meeting Room

The Meeting Room
 Supporting homeless, vulnerable and socially isolated people

Dorking Area foodbank

Protected Hedgerows and Dell Close

Some 50% of hedgerows in the UK have been lost in the last 70 years, about 120,000 miles. Lost along with them are the associated mature ground flora, habitat and nesting sites for many small bird species, and the interconnections and shelter which hedgerows provide to mammals and other animals. New 'Management of Hedgerow Regulations' were published in June 2024, with a view to halting further losses of significant hedgerows. These strengthen the definitions as to what constitutes an important or protected hedgerow.

There are all sorts of ways in which a hedge is rated. Here the hedges on either side of Dell Close are used as an example to clarify.

Hedges need to be at least thirty-years old and over twenty metres in length. Both these criteria apply to the Dell Close hedges. Indeed, they are shown as very mature in the 1920s air photographs and it is apparent that, as there was a thoroughfare through what was the Old Rectory land from before the 1830s, they are likely to be 200-years old or more.

The fact that they form a historical boundary of the church 'glebe' land adds more value, as does the fact that they mark the edges of a pathway/bridleway. That there are two parallel hedges within fifteen metres, and they

have connections to other hedgerows, adds further.

There are further qualifications based on species mixes. The number of certain woody species and of particular ground flora associated with 'mature' habitats are also taken into account. A few years ago, ecological consultants surveyed Dell Close hedges. Their findings, in summary, were that:

- The northern hedge contained enough woody species to be considered both ancient and important, and in addition the mix of ground flora was indicative of a 'protected' hedgerow.
- The southern hedgerow had less of a woody variety but qualified by virtue of the combination of woody and ground flora.
- The proximity of the two added further to their protected status.

The implications are that any removal of all the hedges, or the widening or opening of gaps, would need prior planning approval. Further, there are guidelines on management which aim to stop cutting/trimming between 1st March and 31st August. There are some exceptions, the most notable of which in the case of Dell Close is to allow 'access' (though how free that access needs to be is a moot point). However, ANY disturbance to nesting birds would contravene other legislation,

whatever the status of the hedge or other habitat.

The prospect for hedges is improving these days. In our area, the recent planting around the graveyard and by Mark Frost in Norbury Park are examples of hedges comprised of native mixes, which in time will provide both aesthetic and ecological benefits. If anyone in our community needs whips to start a hedge on their land, however limited the number, please let us know as we can apply for free whips shortly. NB These regulations do not apply to hedges on private residential property.

Mark Day, St Michael's Eco-Group

Norbury Park hedges



Superb professional
cleaning of carpets
oriental rugs
upholstery curtains
and leather
Guardsman
anti-stain protection

- spot stain and odour removal
- leather cleaning specialists
- flame retarding
- dust mite reduction service
- all work fully insured & guaranteed

For a free no obligation quotation call today
Freephone 0808 144 9071
John Joannides 28 Bracken Close Bookham

Safeclean
The furnishing care specialists from GUARDSMAN



Pinehurst Rest Home

We aim to provide an excellent service at competitive rates supporting emotional physical and social needs of our clients always respecting and protecting their status as adults

- Residential and 24-hour day care
- Excellent cuisine
- Facilities for disabled: medic bath / lift
- Home doctor in attendance
- Single & sharing rooms
- Convalescent & short stays
- Lounge with TV & piano
- Separate dining room
- Physiotherapist chiropodist & hairdresser
- Entertainment: theatre visits / parties & cabarets held on premises

**National Trust Road Box Hill
Mickleham Dorking Surrey RH5 6BY**
Telephone: 01306 889942 / 888253

Established Local Family Business

Dorking
Decorators
PROFESSIONAL
PAINTERS & DECORATORS

- Over 20 years' experience
- Internal & External
- Commercial & Domestic
- Friendly, First Class Service
- Surrey / Sussex / Greater London

FREE ESTIMATES
01306 640418
www.dorkingdecorators.co.uk
As approved by Checkatrade

51° NORTH

**SERVING DELICIOUS
BREAKFAST, BRUNCH
& LUNCH EVERYDAY**

GOOD TO KNOW:

- Full alcohol licence
- Venue available for private hire
- Outside catering service
- Boutique bedrooms available for short stays
- Walking routes to 51° North available
- Dogs welcome

LONDON RD, MICKLEHAM, RH5 6EH
FIFTYONE.DEGREESNORTH@YAHOO.COM | 01306 320455

SIMON HOOPER
For all your decorating needs...

Professional, friendly and speedy service at all times

Fully insured	Insurance work
Exterior painting	Interior decorating
Free quotes & advice	Oil & Water-based products
Commercial/Domestic work	Wallpaper hanging & removal

07947 135 376 0208 3978 962
www.slhdecoratingservices.com

Mickleham Parish Council July 2024 Report

The Parish Council boldly added its support to the England football team by moving the start of its meeting to 6.30 pm in order that councillors could cheer the team on after the meeting. The result of that support was clearly seen by the end of the game.

The meeting was pleased to welcome one of our Community Police Team members PC Andrew Whiteley, who reported on crime committed in our area. In particular, he drew councillors' attention to the considerable rise in theft, especially targeting garden sheds. He encouraged everyone to invest in smart doorbells, which store the images of those who approach them, enabling police to follow up on the crime. PC Whiteley also reported the alarming increase in fly tipping. Councillors asked District Councillor Chris Budleigh to raise the issue of the charges levied at the council tips, to see if the reduction of that charge might encourage less fly tipping.

The chair congratulated Feena Graham,

Parish Clerk, and the organising committee of the Village Summer Fair on a highly successful and enjoyable event, despite the weather. A report was also given on the progress being made on the resurfacing of the A24 because of the recent oil spillage. Complaints had been received about the recent decline in the punctuality of the 465-bus service since the new bus company had begun operations.

Will Dennis reported on the situation with tenants in Norbury Park, the length of whose tenancies were being reduced by Halsey Garton, the property company handling Surrey County Council properties. A further tenancy had been extended as a result of the Parish Council's intervention.

The seemingly endless saga of the emptying of the rubbish bins on Mickleham Recreation Ground continues, with no one at Mole Valley District Council accepting responsibility for their regular clearance. Efforts are being made to resolve this very messy



and potentially dangerous health issue.

The Community Speedwatch Team was thanked for their continuing efforts to reduce the number of those vehicles exceeding the speed limit on Old London Road.

The Chair reported on the extraordinary meeting of the Mickleham Parish Council as trustees and legal owners of the Mickleham Recreation Ground and appropriate action was agreed to resolve the issue of maintaining an area of re-wilding for the benefit of the children of the parish.

The meeting closed at 7.43 pm!

David Ireland (Chair)

The 'Your Councillor Community Fund' is open for residents to apply for cash grants to improve their local area. The funding is flexibly designed to help with costs that can range from purchasing sports equipment for local clubs, to skills training for vulnerable groups.

Applications are open until January 2025, however early applications are encouraged.

Look out for posts on social media. If you have any questions, please refer to the YCCF webpage, alternatively, you can send an email to yccf@surreycc.gov.uk

Projects funded last year include:

- £1,493 to help make Spelthorne cleaner and greener by providing group litter picking equipment which can be loaned out to encourage individuals, groups and schools to adopt an area for regular picking and to take a pride in their local environment.
- £2,000 towards equipment for the 2023 Shepperton Village Fair, including banners, sail flags, display board and cashless payment devices.
- £700 towards replacing a 25-year-old table tennis table used by Leatherhead U3A Table Tennis Group, helping to keep members physically and socially active.
- £1,000 towards new uniforms for Godalming Youth Band. The new polo shirts and hoodies are more suitable for events all year round and will be loaned out, much like the instruments, to help keep music-making as accessible as possible.

Community funding available from

**Your
Councillor
Community Fund**

Mickleham Village Summer Fair 6th July

It was surprising and very gratifying that so many turned out for the Village Summer Fair in the rectory garden on a very soggy Saturday afternoon. The months of planning by the committee had really paid off.

There was an impressive variety of activities and entertainments on offer, many aimed at getting punters to part with their money. Along with the various raffles, Hilary's chicken races and the Human Fruit Machine were particularly popular. Throughout the

afternoon music was provided by Jeremy & the Jazzmates and by two of our talented local singers Poppy and Ella Parfitt. Many enjoyed delicious cakes and tea under a large marquee which wisely had been provided. The beer and wine bar was busy too.

Raffle draws produced many delighted winners including Cassandra Bagott, who won Sherree Valentine Daines' lovely print, and the Wilsons who received the mini wheelbarrow of wine. Not surprisingly, they kept the

bottles but the wheelbarrow, a tad small for Jason's use, has been given to the Nursery.

Many thanks to all involved in providing a most enjoyable event which raised around £4,700 to support St Michael's Community Nursery, St Michael's School, Mickleham Playground and the Church Clock Appeal.

PS The post-fair clean-up was achieved in record time as everyone wanted to rush home to watch the Euro Cup semi-final (Result: England 2 – Netherlands 1)

Sue Tatham



Music for a Summer Evening

Mickleham Choral Society

Last year the Choral Society's summer concert was held in the village hall car park. This year we upgraded when St Michael's Parish Priest, Sandra Faccini, very kindly invited us to picnic in the rectory gardens before singing in the church. On a glorious sunny evening with long shadows cast over the beautifully manicured lawns, it looked like the setting of an episode of Poirot or a Just William story.



The concert was a shorter version of our programme for the French abbey in May, English pews being harder to sit on than French chairs. But we had the treat of Judith Flint accompanying us for Fauré's *Requiem* on the church organ, ably assisted by a shaving mirror so she could watch our conductor, Juliet Hornby. For the second half though, Judith moved to the piano for the livelier songs sung in English, Italian and French (oh we're so international now we've been touring).

The choir's Fiona Harrison played the haunting *Romanza* on classical guitar before accompanying soprano Laura Stephenson for Schubert's *An Die Musik*. Having spent the week in France with our magnificent soloists, Laura and

baritone Simon Grant, it was a great joy to welcome them back for this concert.

Things got a bit animated with *Une Perdriole* where choir members turned into hares, ducks, rats and turtle doves to be given to the singer's beloved – lucky boy! Then we women begged Silvy to bring us water again while clapping our bodies in a hopefully synchronised rhythm. It inspired an equally enthusiastic round of clapping from the audience, so that was good. We rounded off with a rousing *Every Time I Feel the Spirit* and then it was back to the rectory gardens to check for small boys with catapults and to sup on the excellent Shere Drop ale from the pop-up bar (aka gazebo).

Dina Stovell



Photo Bogdan Schiteanu

Come and Sing

Thursday 5th September 7.30 for 8 pm Mickleham Village Hall

Mickleham Choral Society meets on Thursday evenings at 8 pm in Mickleham Village Hall. New members are always welcome – no audition is required. We perform three concerts a year plus participating in the Leith Hill Music Festival in April. Just come along for an evening to sing with us and see how you like it. Our first rehearsal of the new season is on Thursday 5th September. Music and refreshments will be provided and of course we hope you have such a wonderful time you will come back for more.



For more information, please go to

www.micklehamchoral.org.uk

or contact our conductor, juliethornby@yahoo.co.uk



Bliss Chimney Sweeps

All appliances swept

Traditional brush & rod Power sweeping
Pots & cowls fitted


Repointing, lead work & roof repairs

Fully insured Certificates issued

Free friendly advice

07739 638431

Blisschimneys@gmail.com

We provide the best possible care for your feet 

Book your appointment:
01372 454583 bookhampodiatry@gmail.com



Bookham
Chiropody & Podiatry Clinic
Diagnosis, Expert Treatment & Professional Care
for Your Feet

3 Hazel Parade, Penrose Road
Fetcham KT22 9PY
www.bookhampodiatry.co.uk

Your visiting

PHYSIOTHERAPIST

SUE JUDD MCSP HCPC

40 years of experience.

All your requirements for elderly
mobilisation & post-operative
rehabilitation.

07834 227 999 sue-judd@sky.com



EDE BROS

REMOVALS · STORAGE · SHIPPING ·

- Since 1926, Capel-based and family owned
- STRESS-FREE, local, national & worldwide
- Contact us for your **FREE** estimate...

01306 711293
edebros.co.uk



Home Counties Carers  HELPING PEOPLE AT HOME
Live in Care

We are a close-knit family-run home care business
that is committed to providing friendly and reliable
carers, who genuinely care.

- Friendly, vetted trained and proven team
- 24/7 office support throughout the care package
- Experienced in caring for those with dementia

For more information and to arrange an assessment call us on
01483 224985 • 01737 354821
www.homecountiescarers.co.uk

P J Oliver & Son

Window cleaning
House & Garden Maintenance
Roof Repairs, Guttering
Painting & Decorating
Ground works, fencing, hedge cutting,
and tree work
Also Pest control

Call Phil on 07722 158 111
Email Oliviagarrett79@gmail.com



YOUR LOCAL FARM SHOP
ON DENBIES WINE ESTATE

farm shop deli plant centre

Open daily 9.30 to 5.30 pm and Sundays 10 am to 5 pm

Local Produce, Seasonal Food, Plants and Flowers

Excellent selection of English apples

We deliver veg bags and more to the local area on Fridays
see www.vgfarmshop.com or email vegbag@vgfarmshop.com for details

LOCAL • NATURAL • ETHICAL 01306 880720 www.vgfarmshop.com

Mickleham and Westhumble Horticultural Society Summer Show Saturday 13th July

A perfect summer's afternoon in this rather imperfect summer was the setting for this year's horticultural show. The village hall was bedecked with the wonderful bees from the Nursery School, appropriately hovering over the delicious cakes, jams and jellies - quite a bumper number of entries this year. Quality vegetables and flowers from our local gardens filled the hall and provided a colourful spectacle.

Outside, visitors enjoyed the plant stall, Garden Shed, local artwork, Harry's Pies, and the ever-fascinating world of bees provided by Reigate Beekeepers, with their live demonstration hive always an object of fascination. Whirring away in the background was the tool sharpener, kept busy all afternoon by a

steady stream of gardeners with their various blunt instruments. This has proved a popular innovation, and we will continue it in future years.

Come 4.15 pm and Will Dennis, our VIP this year, stepped forward to present the prizes, blinding us with his Portillo-esque peach jacket and amusing story of his cooking prowess by proxy! Our winners came forward to receive their trophies and there was still time to take in a bit more tea and cake provided by the lovely mums of St Michael's Nursery.

Despite the road chaos caused by the massive diesel spill a few days earlier, this was a quintessential village occasion enjoyed by all who came.

David Kennington



Cup and medal winners

Paynter Cup, attractive and productive vegetable plot

Pauline Davis

Aitken Cup, area for nature

Pauline Davis

Ellman Cup, most outstanding exhibit – flowers

Paul Walton

Robson Cup, most outstanding entry – vegetables

Sarah Penry

Schreiber Cup, most outstanding entry – fruit

Sophie Adshead

Gordon Clark Cup, most outstanding entry – floral arrangements

Alison Walton

Dennis Trophy, most outstanding entry – cookery

Sarah Pritchard

Vi Bullen Trophy, most outstanding entry – arts and crafts

Maddy Halliwell

Alan Huggett Memorial Cup, best dahlias

Sue Willis

Taylor Cup, most points – cookery

Sarah Pritchard

Colwell Cup, most points – arts and crafts

Clive/Angela Gilchrist

Bronze Banksian Medal, most points – horticulture

David Allbeury

Salomons Cup, most points in show

Sarah Pritchard

Heygate Cup, " " " 5 - 8 years

Verity Ward

Wilkinson Cup, " " " over 9 years

Martha Ward

Apologies to the winners of individual categories who are too many to print here. They are listed on the M&WHS website.

Photos from the top

Sarah Penry with Robson Cup, Will Dennis to left and David Kennington, Chair of M&WHS to right. Ovella by her winning onions

Nursery bees

Paul Walton with Ellman Cup

Exhibits in the hall

David Allbeury's currants

Alison Walton's roses

Angela and Clive Gilchrist with Colwell Cup

A Visit to RHS Chelsea Flower Show

It was a rainy day at the end of May when we took advantage of complimentary tickets to the RHS Chelsea Flower Show (one of our daughters worked for the RHS). It was a wonderful experience, despite the showers. We are late reporting our visit as May-June is such a busy gardening time, and we were inspired by the show to get on in our own gardens.



The RHS logo beautifully wrought in roses alongside Beth, the useful daughter

As ever at Chelsea, there was a wide variety of gardens to see, from some large designs to the tiny, innovative balcony gardens.

The Best Show Garden was Muscular Dystrophy UK's 'Forest Bathing Garden'. The garden was inspired by Shinrin-yoku, a Japanese practice of connecting to nature by 'bathing' in a forest atmosphere. It was designed to be accessible for people suffering from muscular dystrophy and contained a 'forest' of more than forty birch trees. The 'Octavia Hill Garden' won the People's Choice for Best Garden. It celebrated the life of Octavia Hill, a founder of the National Trust, who believed that 'the healthy gift of air and the joy of plants and flowers' were vital for everyone'. We have to say we agree. The garden included lots of British plants including foxgloves, flags, irises and geums. These are all plants that are good for pollinating insects, something that was emphasised across the show. These gardens were both lovely and peaceful, but our personal awards went to some different exhibitors!

Our favourite Show Garden was the Terrence Higgins Garden 'Bridge to 2030', designed by Matthew Childs, of Reigate. The garden was inspired by the reclamation of disused slate quarries in North Wales and won the Best Construction Award. The planting was gentle with wispy grasses and airy plants growing amongst the impressive

amount of grey slate. We particularly liked the use of *Aquilegia* 'Yellow Queen' which neither of us had seen before (seeds now obtained and seedlings coming on for next year!) Beautiful red bursts of *Dianthus cruentus* were scattered amongst the grasses and other flowers. The clever planting drew a lot of attention as everyone was asking what it was.

The moss garden, 'MOROTO no IE', was serene and meticulously created. The designer, Kazuyuki Ishihara, has won many gold medals at Chelsea. He is such an exuberant, smiley man and we had the pleasure of seeing him being so as he squeezed past us with visitors to his garden.

There was also much to see inside the Marquee. We particularly enjoyed the Cape Flora of South Africa display by Leon Kruger, with its amazing variety of colourful proteas. Another highlight was seeing Monty Don and Joe Swift as they prepared to talk to camera. Monty seemed as pleasant and lovely as he does on television!



Leon Kruger's colourful proteas



Rose 'Chelsea Pensioner'

'She Grows Veg Ltd' of the UK Heirloom Seed Co. had a particularly fun stand. They had made beautiful 3D art with some gorgeous fruit and veg in huge gold frames. It was a stunning display showing off some unusual vegetables in a unique way and deserved its Gold Medal. (You can see photos on @shegrowsveg on Instagram.)

As we left the Marquee to go home, we wandered past the 'Harkness Roses' stand to see the new red rose, 'Chelsea Pensioner'. We were particularly pleased with our photo of this rose and an actual Chelsea Pensioner taking a rest.

Sue Willis and Janet Barker

Garden Shed Visit to Great Dixter

Normally the focus of Garden Shed visits is to experience the gardens and planting. However, on this occasion admission to Great Dixter included access to the whole estate, and we discovered that the influence of the family who lived there for almost a century has created an evolving legacy for these world-famous gardens and house.



Dating from the 15th century, the original house was purchased by Nathaniel Lloyd and his wife Daisy in the early 1900s. Nathaniel had made his fortune in printing and wanted to retire somewhere with good golf courses and space to indulge his passion for collecting antique furniture.

While at first glance the house appears to be one medieval building it is, in fact, made up of three. The first and main part is a manor house built in the mid-15th century. Added to this was a 16th century yeoman's hall transported from Benenden in Kent. The third part was designed by Edwin Lutyens when he was just 20 years old. Lloyd was so inspired by the restoration process he taught himself architectural draughting skills. A desk and chair he designed and made specifically for this work remain in the house. When Christopher, the youngest son took over running the estate, he continued his father's tradition of valuing how things are made and he commissioned several pieces of contemporary furniture.

In the meantime, Daisy set about developing the gardens with her husband, which includes Lutyens' features like the circular steps and pergolas. Boreholes were drilled to provide irrigation and parts of the



medieval upper moat surrounding the house were drained and turned into garden areas while the lower moat, which still has water, was retained. The garden was divided into a series of small gardens including a topiary, rose and kitchen garden along with a large orchard with many pockets of wildflowers and a long herbaceous border.

Christopher, who was born in 1921 and lived his whole life at Great Dixter, built on the work of his parents. After serving in WWII, he studied decorative horticulture and on his return home he devoted the rest of his life to developing the garden until his death in 2006. For fifty years he wrote about the gardens at Great Dixter, and over that time published twenty-five books and weekly articles for *Country Life*, many of which can be seen on the bookshelves in the house.

Lloyd is famous for once having said 'if you love gardening, don't be afraid

to garden' and 'a great garden needs work.' This was evident as we wandered alongside colourful beds and borders teeming with bees and spilling onto the narrow paths creating the feeling of being in a large intimate cottage garden. Although there were low-maintenance shrubs and perennials, amongst and between these were seasonal plants, which need to be constantly replaced along with self-seeded plants that created unity and a feeling of spontaneity.

Today Great Dixter Charitable Trust and Fergus Garrett, whom Lloyd took on as head gardener in 1992, continue to maintain the house and gardens. As well as being a superb gardener, Fergus was well ahead of the curve in recognising the value of nurturing biodiversity and respecting ecology in an ornamental setting. Now he devotes his time to sharing all his knowledge with students who will become the next generation of head gardeners; the Trust provides free training for gardeners through scholarships and trainee positions.

There is so much more to see and experience at Great Dixter than space on this page, so if you are looking for somewhere to visit this summer, I think all those who joined us on our visit would agree, this is a worthwhile destination.

Cathy Lee
Photos Susie Gowenlock



Bed using conifers as a backdrop

This is the second year that The Garden Shed has organised a tool sharpening service at the M&WHS Horticulture Show. With the closing of the M25 we were not sure if many people would be able to get to the hall. However, we had a large number turn up again, with gardening tools, kitchen knives, and so on. All were very happy with the professional service. We have already booked Richard to come back next year.

Susie Gowenlock



Join us for a guided tour of
RHS Hyde Hall
 Thursday 12th September at 10.30 am
 Entry free, tour is £7
 Lunch (not included) available at the Clover Cafe
 Self-drive, car-share where possible

See our website for details www.gardenshed.club
 Pauline Davis 077596 646353 or paulinedavis33@icloud.com

A Confidential & Safe Space to Talk

Counselling • Mind & Body Healing
Reiki • Relax into Nature Sessions

Face to face/Online/Outdoors/Distance

Supporting you with compassion and understanding through challenging times



Call Judith Cobby
on 01306 882229
or 07790 614448

www.healing-inspiration.co.uk

Rowlatt Garden Services

RGS

EST.1985

**Gardens large and small
we maintain them all**

All aspects of private and commercial garden
and estate maintenance landscaping undertaken
Fencing grass & hedge cutting

Telephone: 01737 841524 Mobile: 07887 838666
References available upon request

DORKING PEST CONTROL SERVICES

Local Authority Approved Contractors

**Our services include: wasps, bee swarms,
hornets, bed bugs, fleas, flies, ants,
cockroaches, rats, mice, squirrels,
rabbits, moles, foxes and deer**

EXPERTS IN PEST CONTROL THROUGHOUT SURREY

01306 743001 Ivor: 07710 117491 Chris: 07971 519415
Family-run business with over 30 years' experience

www.dorkingpestcontrol.com



KING WILLIAM IV

Dear friends & neighbours,

How wonderful was August? Sunny days, warm evenings, and catching up with so many of you. Let's hope September continues this dry spell. Our final two outdoor music evenings are on 1st and 8th September between 4.30 & 7.30 pm.

We want to publicly share our enormous thanks to Steve (Lawrence) who came to our rescue after our water tank cracked, leaving us paddling around our office. We are eternally grateful to you Steve.

Hope to see you soon,

Eamonn & Anne x

Byttom Hill Mickleham 01372 372590 www.thekingwilliamiv.com

TIM LANGLEY

Experienced craftsman

ANTIQUUE RESTORATION
CABINET MAKING
FRENCH POLISHING

Free estimates collection & delivery
01372 457700 07960 486455
tmlangley@virginmedia.com

TONY WINCH

CARPENTER, JOINER
& CABINET MAKER

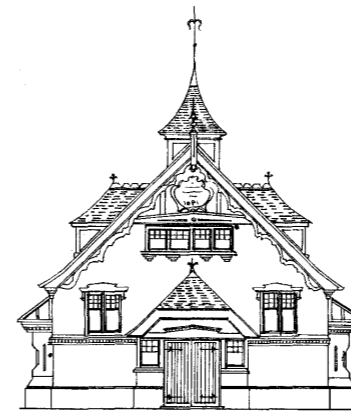
www.tonywinch.com

01306 742373
07969 016 924

DORI VANA PLUMBING

Bathroom renovations and
all plumbing services

07977 220465 / 01306 887282
dvanaplumbing@gmail.com



Mickleham Village Hall available for hire

Hall bookings
Table & chair hire

Deanna Darnell

07790 941 601

bookings@micklehamvh.co.uk

www.micklehamvillagehall.org.uk



Planning
a party?

Equipment
available for hire

China ~ Cutlery

Electric urn

Equipment hire

Mary Banfield

01372 373912

admin@micklehamvh.co.uk

Community Directory

BOX HILL AND HEADLEY HEATH (National Trust)	01306 888793
Lead Ranger – Meredith Westall (Merry)	meredith.westall@nationaltrust.org.uk 07811 088097
Friends of Box Hill – Chair Lyn Richards	01737 842889 lyn@mra.uk.net
BOX HILL SCHOOL	01372 374814
Headmistress – Hayley Robinson	reception@boxhillschool.com
DORKING CRICKET CLUB	01372 374814
Chairman – Andrew Homewood	homewooda@hotmail.co.uk
DORKING GROUP OF ARTISTS	01372 374814
Exhibition Secretary – Patricia Booth	patriciabooth100@gmail.com
DORKING LAWN TENNIS & SQUASH CLUB	01372 374814
Maddy Halliwell	madeline_halliwell@hotmail.co.uk
DORKING RUGBY CLUB	07789 176417
Jim Evans	jim@flintcottage.net
THE GARDEN SHED	07759 646353
Pauline Davis	paulinedavis33@icloud.com
JUNIPER HALL FIELD CENTRE	01306 734501
Head of Centre – Maddy Jones	enquiries.jh@field-studies-council.org m.jones@field-studies-council.org
Friends of Juniper Hall – Suzy Hughes	01483 281935 suzy@suzyhughes.co.uk
MICKLEHAM CHILDREN'S PLAYGROUND ASSOCIATION	07767 891772
Secretary – Sarah Parfitt	sarah@sarahparfitt.com
MICKLEHAM CHORAL SOCIETY	www.micklehamchoral.org.uk
THURSDAYS 8 - 10 pm – MICKLEHAM VILLAGE HALL	01372 373106
Conductor – Juliet Hornby	01372 373106
Secretary – Mike Benson	secretary@micklehamchoral.org.uk
MICKLEHAM OLD BOX HILLIANS FOOTBALL CLUB	01372 374745
Secretary – John Atewell	01372 374745
MICKLEHAM PARISH COUNCIL	www.micklehampc.org.uk
SEE WEBSITE FOR MEETING DATES	01372 379381
Chairman – Rev'd David Ireland	rev.ireland43@btinternet.com clerkatmpc@gmail.com
Parish Clerk – Feena Graham	clerkatmpc@gmail.com
MICKLEHAM PARISH MAGAZINE	07933 300744
Co-Editor – Charlotte Daruwalla	editor@micklehammag.co.uk
Co-Editor – Jan Budleigh	07780 976301 editor@micklehammag.co.uk
MICKLEHAM VILLAGE HALL	01372 362309
Chairman – David Kennington	davidkennington144@gmail.com
Bookings Manager – Deanna Darnell	07790 941601 bookings@micklehamvh.co.uk

ST MICHAEL'S CHURCH

*within the United Benefice
of Leatherhead and Mickleham*

INCUMBENT – The Rev'd Will Perry 01372 372313

PARISH PRIEST
The Rev'd Dr Sandra Faccini * 01372 417664
07763 488961
parishpriest@micklehamchurch.org.uk
* Main working days: Monday, Tuesday and Sunday

CHURCHWARDEN
Catherine Diffey 07790 473167
Mickleham@diffey.me.uk

DEPUTY CHURCHWARDEN
Timothy Mathieson 07555 597163
TimothyMathieson@aol.com

PARISH ADMINISTRATOR
Alison Wood 01372 376443
admin@micklehamchurch.org.uk

PCC SECRETARY
Caroline Jones 07504 271376
pccsecretary@micklehamchurch.org.uk

TREASURER
Richard Siberry 01372 375303
pcctreasurer@micklehamchurch.org.uk

ORGANIST
David Fishwick 0208 7732420
davidfishwick1@btinternet.com

WEDDINGS CO-ORDINATOR
Elaine Machin 01372 724972
weddings@micklehamchurch.org.uk

BAPTISMS CO-ORDINATOR
Vickie Leney 01306 884054
baptisms@micklehamchurch.org.uk

FUNERALS CO-ORDINATOR
Carole Brough Fuller 01737 842918
funerals@micklehamchurch.org.uk

WEBSITE MANAGER
Kelvin Pritchard 07770 280410
website@micklehamchurch.org.uk

PCC ECO GROUP
David Kennington 01372 362309
davidkennington144@gmail.com

www.micklehamchurch.org.uk

For information about services for other denominations
see website pages.

Search on 'Churches Together Mole Valley'

MEMBERS OF THE PAROCHIAL CHURCH COUNCIL

Sarah Pritchard	Elaine Machin
Mark Day	Tim Mathieson
Andy Diamond	Beverley Mehta
Catherine Diffey	Kelvin Pritchard
Caroline Jones	Richard Siberry
Vickie Leney	Geoff Black

CALENDAR SEPTEMBER

1 **Fourteenth SUNDAY of Trinity** 10 am

Family Service

3 Tuesday 7 pm

Compline in church

5 **Thursday** 7.30 pm

MCS Come and Sing invitation at MVH p7

7 Saturday 10 am to noon

Coffee at Westhumble Chapel p2

8 **Fifteenth SUNDAY of Trinity** 10 am
11.30 am

Holy Communion (with first creche)
BCP Morning Prayer at Westhumble Chapel

Copy deadline for

October magazine

11 Wednesday 7.30 pm

MPC meeting in Ranmore Room

12 Thursday 10.30 am

Garden Shed visit to RHS Hyde Hall p20

14 Saturday 10 am - 4 pm

Churchyard connection with nature for HOD p21
Exhibition on A24 in church for HOD p21

15 **Sixteenth SUNDAY of Trinity** 8 am
10 am

CW Holy Communion
Holy Communion

16 Monday 3 pm

Tea@3 p2

17 Tuesday 7 pm

Compline in church

20 Friday 10 am - 1 pm

Macmillan Coffee Morning at Chapel Farm p23

21 Saturday 9 10 am

Women's breakfast at The Stepping Stones p2

22 **Seventeenth SUNDAY of Trinity** 8 am
10 am
3 - 5 pm

BCP Holy Communion at Westhumble Chapel
Holy Communion
Tea and Cake at St Michael's Church p2

24 Tuesday 3.30 - 5 pm

M&WLHG walking tour, Little Bookham Street p21

28 Saturday 9 - 10 am

Men's breakfast at The Stepping Stones p2

29 **Eighteenth SUNDAY of Trinity** 10 am
6 pm

Morning Prayer
Sundays at 6 at church



Dates for your diary

Thursday 3rd October
Saturday 5th October
Sunday 6th October
Sunday 6th October
Saturday 12th October
Friday 25th October
Saturday 9th November
Thursday 14th November

FOJH talk from Nick Laphorne p19
Harvest Supper p3
Children's harvest craft workshop
Harvest Service in church
Bonfire building starts p25 for times
Dorking Group of Artists exhibition starts p23
Bonfire and Fireworks Evening
FOJH talk on 'The Secret Life of Bees' p19



REGISTERS

BAPTISM
Sunday 7th July Perseus Dennis Bonnin son of Tertius
Bonnin and Alexandra Dennis

WEDDING
Saturday 27th July Stephen Pastore and Kelly Masters

SERVICE OF THANKSGIVING
Monday 1st July Megan Felicity Tushaw (née Loveless)

FUNERAL AND BURIAL IN CHURCHYARD
Monday 8th July Maureen Hayford
Tuesday 16th July Jean Isabelle Cameron Suckling

INTERMENT OF ASHES IN PARENTS' GRAVE (RA13) IN
CHURCHYARD
Tuesday 23rd July Michael Naudent

INTERMENT OF ASHES IN GARDEN OF REMEMBRANCE
Saturday 13th July

Rev'd John Vincent Michael Gordon Clark
Thursday 1st August Hugh and Jill St George Carey

ST MICHAEL'S CHURCH COMMUNITY GROUP COMMITTEE

Mark Day	07852 117249 mickleham@hotmail.com
Denise Darling	denisedarling4@btinternet.com 07780 673372
Andy Diamond	07789 775354 adiamond714@gmail.com
Kelvin Pritchard	07770 280410 Kelvin@wan2lan.com

ST MICHAEL'S CHURCH COMMUNITY GROUP HELPING HANDS INCLUDING FOOD FOR FRIENDS

A service for all residents of Mickleham and Westhumble
Examples of services we offer:

- Essential shopping / collection of prescriptions
- Changing library books
- Small tasks: eg changing fuses, altering clocks etc
- Dog walking
- Visiting / befriending
- Home-cooked meals for local families going through difficult times

Requests to:

Will Dennis 07903 842674 wdwdennis@icloud.com (who can
put requests onto WhatsApp)

Mary Banfield 01372 373912 mgbbmw@aol.com

Frances Presley 01306 882473 jasempres@gmail.com

*More helpers needed – please contact
Frances if you can spare some time.*

Community Directory

Continued from page 13

MICKLEHAM & WESTHUMBLE BADMINTON CLUB	
Membership Secretary – Sarah Pritchard	tinkerbell0044@hotmail.com
MICKLEHAM CRICKET CLUB	
Membership contact – Will Dennis	07903 842674 will@micklehamhallfarm.co.uk
MICKLEHAM & WESTHUMBLE HORTICULTURAL SOCIETY	
Chairman – David Kennington	01372 362309 www.surreycommunity.info/mwhs or davidkennington144@gmail.com
MICKLEHAM AND WESTHUMBLE LOCAL HISTORY GROUP	
Chairman – Ben Tatham	01306 882547 ben@thetatham.s.co.uk or www.micklehamwesthumblehistory.co.uk
MOLE VALLEY DISTRICT COUNCIL	
Cllr Chris Budleigh	01306 885001 07801 520059 councillor.budleigh@molevalley.gov.uk
Cllr Abhiram Magesh	07765 126399 councillor.magesh@molevalley.gov.uk
Cllr Leah Mursaleen-Plank	07803 353352 councillor.mursaleen-plank@molevalley.gov.uk
THE ARTS SOCIETIES (FORMERLY NADFAS)	
Betchworth – Mary Venning	01306 883301
Dorking – Sue Tatham	01306 882547
Leatherhead – Sarah Sheridan	01306 883699
ST MICHAEL'S CHURCH OF ENGLAND (A) INFANT SCHOOL	
01372 373717	info@stmichaels-dorking.surrey.sch.uk
Friends of St Michael's School – friendsofstmichaels2017@gmail.com	
ST MICHAEL'S COMMUNITY NURSERY	
WEEKDAY MORNINGS – MICKLEHAM VILLAGE HALL	
Supervisor – Hilary Budd	01372 361021 stmichaelsnursery@btinternet.com
SURREY COUNTY COUNCIL	
Councillor – Hazel Watson	03456 009 009 01306 880120 hva.watson@btinternet.com
SURREY WILDLIFE TRUST	
01483 795440	info@surreywt.org.uk
TREE WARDEN	
David Kennington	07546 952521 davidkennington144@gmail.com
WESTHUMBLE NEIGHBOURHOOD WATCH	
Lead Co-ordinator – David Allbeury	07860 227451 westhumble.neighbourhood.watch@gmail.com
WHATSAPP GROUP	
Will Dennis	will@micklehamhallfarm.co.uk
ADDITIONAL CONTACT INFORMATION	
CITIZENS ADVICE	
Dorking – Lyons Court	01306 732302
Leatherhead – Swan Mews High Street	01306 732301
CRIMESTOPPERS	
0800 555 111	
POLICE Non-emergencies	
101	
<i>(often quicker to make online report) https://report.police.uk/</i>	
Neighbourhood Specialist Team – Dorking Rural East	
General enquiries molevalley@surrey.pnn.police.uk	
NHS Urgent and emergency care	111

Babysitting by local youngsters

*Those listed below are at least
14 years old.*

Gracie Owen	**07790 900649
Annabelle Prosser*	07443 634179
Maisy Presley***	07720 657327
Martha Pearce*	07514 080005
Rory Lee	07503 702517
Daisy Armitage	07891 188142
Olivia Newby	07703 110363
Eva Lanceley	**07903 630567
Ella Parfitt	07746 882175

- * Holidays only
- ** Parent's mobile number
- ***Weekday evenings only

*If you would like to add your
name to this list please get in
touch with*

editor@micklehammag.co.uk

No Charge

Advertising in the Parish Magazine

Please contact

ads@micklehammag.co.uk

Small ads: a nominal fee is
charged for ads where items or
services are bought or sold.

We have been advised to print
the following reminder:
*We cannot guarantee the
quality of the goods and
services offered by our
advertisers.*

*We are very grateful to all our
advertisers, who make the
production and distribution of
this magazine possible.*



Megan Felicity Tushaw née Loveless 1990 – 2024

St Michael's was filled to capacity on 1st July when family and friends gathered to give thanks for the life of a remarkable, courageous and much-loved young woman. Megan died peacefully surrounded by her family in her childhood home on 6th June, aged just 33.

The first of three tributes was given by Fergus Andrew. He and Megan had been friends since infancy and he recalled that, even at the age of ten, Megan was effortlessly cool and self-assured. He recounted tales of their families' holiday adventures when the two of them would go off and find something 'fun' to do, leaving their brothers to more serious endeavours such as building bivouacs and dams.

Next we heard from Anna Harvey-Peace and Rose Hooks who met Megan when they started at Reigate Grammar School and, along with five others with a mutual passion for sport, formed a close-knit group which has endured over the past 22 years. Since school they have taken the London social netball leagues by storm, bossed the dance floor at each other's weddings and made the most of every opportunity to plan girls trips somewhere, still with the same level of chaos and glamour as always. They concluded: 'Megan had an energy that shone so bright – a spark that lit the room. Her carefree spirit and zest for life was nothing short of magical, inspirational and heroic. We will always cherish these precious memories and will be forever grateful for the journey we shared with her.'

Next Rose turned to the piano where her beautifully sensitive playing of Debussy's *Clair de Lune* had the congregation spellbound.

The final tribute was given by Megan's father, Steve who recalled 'Megan was born on a crisp, sunny December day, a day she would have described as a 'bluebird day'. As a young girl she was more interested in making mud pies than being the princess her

mother, Siân had hoped for. Most of her early holidays were spent in the Alps, both summer and winter. She developed a taste for adventure and the outdoors together with the inevitable competitive edge as she was often the only girl among four or five boys. She started skiing aged two and by five was proficient enough to ski all afternoon with the adults. Skiing became her passion, and we spent many memorable holidays as a family and with friends in the Alps and Canada.

'Megan was one of those people who are naturally gifted at almost any sport she turned her hand to although she was too modest to admit it. She represented Surrey under-13s at squash and competed in the Welsh National Swimming championships in addition to winning numerous club championship medals. Despite being relatively short she was an excellent goal shooter at netball and a fearsome centre back at hockey. I'll never forget cringing on the touch line as my angelic daughter swung her stick wildly as the opposing attackers cowered with fright. After Reigate Grammar she decided to have a gap year and set off for Whistler, Canada for a three-month ski instructor course. By the time she returned she was completely smitten with the mountains as well as becoming an excellent skier. She completed her education at Leeds University getting a degree in geography. She was a member of the Leeds teams that won the British Universities Water Polo and Squash competitions.

'She worked for a number of charities in a fundraising capacity and those who worked with her at Bliss and Anthony Nolan will testify to her warm, friendly, enthusiastic manner and her willingness to support others. During her time at Bliss she organised the Ride 100 team with training rides around the Surrey hills which she led and ended up completing the ride with Siân. While living in Tooting and working at Bliss she met Tom and indoctrinated him in the



outdoor life encouraging him to ski, cycle and hike. Soon they decided to move to Chamonix where they spent several happy years indulging their passion for the mountains before sadly in 2019 Megan was diagnosed with a rare type of lung cancer which had already spread widely.

'After her diagnosis she was determined to remain positive and live life to the full. Although she had to endure eight months of chemotherapy during Covid lockdowns, true to her character she tried to help others by raising money for the Marsden charity with a marathon run over a one-month period – not bad for someone with lung cancer.

'She and Tom married in 2021 at a small ceremony in Eyam in the Peak District with six of us in attendance. They had recently bought a cottage and set up home in Tideswell. An immunotherapy trial at the Royal Free gave her renewed hope and she was able to return to skiing, cycling and hiking again and to join Tom developing his love of climbing. This lasted for about 15 months before her disease progressed again.

We will always be grateful for the care and kindness she received from Royal Marsden Hospital, Royal Free Hospital, her medical practice and especially St Catherines Hospice. Megan was so brave throughout her illness, enduring multiple courses of treatment with hardly a complaint.'

We send our love and deepest sympathy to Tom, Siân, Steve, Rob, Charlotte, Freddie, Sophia and Megan's many friends.
Sue Tatham

Jean Isabelle Cameron Suckling 1932 – 2024

A service of thanksgiving for the life of Jean Suckling was held at St Michael's on 16th July just three days short of what would have been her 92nd birthday. Many gathered to say farewell to a kind, gentle and unassuming woman who along with her husband Geoff had made a remarkable contribution to our community.

Jean was born in London, but had strong Scottish roots. In fact, she met Geoff at a Burns Night supper in 1960. They fell in love and were married in 1962 at the Crown Court Church of Scotland in London. They moved to Westhumble in 1962. Jean confessed that marrying Geoff had rescued her from her primary teaching career in north London, which she had found very challenging. Thereafter she became a loving and supportive wife to a man who, despite his softly spoken manner, lived life in the fast lane. Geoff acquired businesses as some acquire souvenirs and his entrepreneurial skills never left him.

In his address during the service David Ireland recalled a conversation about when bridge became such an important feature of Jean's life. She replied with her usual honesty 'we were unable to have children, so I became a founder member of the Bookham Bridge club in

order to occupy my time while others were pushing their prams around'. She never mentioned the fact that she was an extraordinarily good bridge player and was still playing within three weeks of her death. She left special instructions that her funeral should not take place on the day her bridge club meets.

Geoff was a highly effective and widely respected international businessman. Everything he did was tackled with energy and commitment – and concern for those involved. His commercial acumen brought him great wealth. However, Jean and Geoff chose to live relatively modestly and devote much of their time, and money, to helping others, quietly and often anonymously. Virtually every community enterprise in the parish has benefited from their amazing generosity. Through their Ranmore Trust they have helped countless others as well. Geoff was only able to do all this because of Jean, who supported him lovingly every step of the way and continued to do so even in his last difficult days. Geoff died in December 2011.

Jean was motivated by a deep compassion for the needs of others and a consciousness of her own good



fortune prompted by a very strong faith stemming from her early days in the church of Scotland. She was always wanting to learn more about the needs of a younger generation and to understand the ways in which those needs could be addressed. She rarely offered criticism of others, unless of course they played a foolish hand of bridge! She continued to listen to our church services on her slightly outmoded mobile phone and drew great strength and inspiration from them particularly in the last period of her life.

At the end of the service Jean's coffin was carried out of the church to strains of the Skye Boat Song. In the churchyard she was laid to rest beside her beloved Geoff. Their legacy lives on.

Chaos on the A24

Sometime in the early hours of Tuesday 9th July a tanker truck, reportedly after being involved in a collision at Beare Green, leaked 400 litres of diesel along a 10-mile stretch of the northbound A24 from Beare Green to the Cobham Services on the M25. The slippery surface caused several accidents before the entire carriageway was closed.

As contact with diesel degrades the road surface it was necessary to resurface 75,000 m² of road. Needless to say, this caused havoc. People with houses on the northbound A24 were isolated and the bus route closed. Alternative routes to and from Mickleham and Westhumble had to be found. The Chapel Lane/Ranmore Road route was particularly problematic. Many cars now bear the scars from the overgrown

hedges. Horror stories abounded of incidences of meeting commercial vehicles such as removal vans and scaffolding trucks, or being faced down by their drivers who refused to reverse even though a passing place was nearest to them.

It has to be said that the road repair work started almost immediately with large crews working at several places along the route. It was made possible for traffic to exit Westhumble Street and use the inner lane to the Burford Bridge roundabout, giving access to the Old London Road to Mickleham and the southbound A24 to Dorking. Frequent updates on access and progress provided by residents via WhatsApp and Westhumble emails were particularly helpful. Thanks are especially due to Will Dennis who

cycled our length of the road to report on progress at various times during the closure. The road reopened on 19th July. Many remarked how well and surprisingly quickly the work had been done.

As the saying goes 'every cloud has a silver lining' and I guess ours is a lovely new road. Also the residents of Mickleham enjoyed 10 peaceful days with relatively little traffic noise.

In addition, this event has highlighted the need for careful preparation of the Chapel Lane/Ranmore Road route before the proposed work on the bridge over the railway in Westhumble begins. The hedgerows must be cut back with more well-defined passing places established. Could some sort of traffic light system be used to facilitate progress along the route? Sue Tatham



Community News

Congratulations and warmest wishes to all below

David and Tracy would like to announce the arrival of Rémi Harrison Kennington McKellar to parents Georgie and Mark, a brother for Otilie. He was born on 11th July in Thonon-les-Bain, France weighing a healthy 10lbs 9oz.

We say farewell to,

- Jean Soden who has moved from Chapel Lane to Saffron Walden to be nearer to family after John's death.
- The Sheridans who have moved from Pilgrims Close to Dorking.

A warm welcome to all these new residents.

- Camilla Forti who has returned to Westhumble.

- Gemma and Dan. *Gemma writes*, 'We are Dan and Gemma and moved from Worcester Park to Westhumble with our dog Reggie and new baby in a few months! Dan works in London and is originally from South Africa. I am much more local with my parents in Banstead, and I work at RHS Wisley. We are looking forward to becoming part of the community and have already been made to feel very welcome.'
- Toby and Sinead with children Luke (9), Simon (6), and Ava (4) who have moved to Westhumble from Dorking.
- Greg Taylor, Hannah North and two-year-old Poppy who have moved from Wimbledon to Pilgrim's Way.

Friends of Juniper Hall

In June the Friends had a well attended evening meeting, which included a buffet and a talk on 'Rewilding' including the story of the Knepp Estate just south of Horsham. This is an internationally recognised success story where unproductive farmland has been turned into a haven for wildlife. It is famous for its population of storks and one of the hot spots in the UK for nightingales as well as a range of other mammals, birds and insects.

On 20th July, Juniper Hall, in collaboration with the Friends of Juniper Hall held an Open Day and Bioblitz event, which was attended by almost 100 people many of whom were families with young children. There were fun outdoor activities for the whole family including pond dipping, worm charming, bushcraft and observing the contents of moth and mammal traps. There were

stalls representing a number of wildlife groups including the local beekeepers and the British Trust for Ornithology. Refreshments included a barbecue, and tea and homemade cakes.

During the afternoon there was a ceremony to open 'Sanctuary', a new tranquil garden where students and staff can take refuge for quiet reflection. It was named after Sarah the Centre Education Team Leader in recognition of her efforts and in particular the work she put into organising the event.

There was also a display showing the history of the hall and a conducted tour by the Centre Manager. One visitor had travelled from Lincolnshire to see the place where his mother worked as a parlour maid in the 1930s.

Everyone seemed to have an enjoyable time despite a brief spell of rain. The next Friends meeting is on 3rd October

when we will have a talk from Nick Laphorne a former Head of Juniper Hall Centre. Details will be available on our website. On 14th November there will be a talk "The Secret Life of Bees" by Stephen Savage who will introduce us to the private lives of a selection of the UK's 250 bee species. This will be at 11.30 am followed by a light lunch.

All these activities enable the Friends to raise money to support the Field Study Centre and provide additional facilities for the students. The latest contribution was a large stretch tent which can be used as an outside classroom, cinema and meeting place during the summer months. You can find out about the Friends of Juniper Hall, our events and how to become a member by visiting our website friendsofjuniperhall.org or contacting us via email on, friendsofjuniperhall@gmail.com

Peter Almond



Open Day stalls



The stretch tent



The Sanctuary

& Derek Horne Associates

Your local **Town Planning Consultancy** winning permissions for over 30 years!

W: horneassociates.com | E: info@horneassociates.com | T: 07767 477978



Scan with your phone camera to find out more.

CURCHODS

Thinking about moving in 2024?

Buy, sell, let and rent in Bookham, Fetcham, Mickleham, Westhumble and Dorking with your local award-winning estate agent.

01372 450500 | bookham@curchods.com

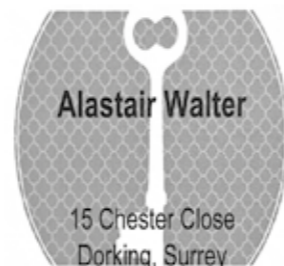


GB PLASTERING

Established 1999

We offer all aspects of plastering from small repairs to new builds
All undertaken by skilled plasterers, respecting your home and property
Full insured Westhumble based
07970 591962

Cole and Walter Lock & Key



15 Chester Close
Dorking, Surrey
07890 609194 alastairwalter123@btinternet.com
Supply and installation of all locks
Residential and Commercial

All your annoying & odd jobs fixed fast



Are you: struggling to get your odd jobs done?
lacking the necessary skills?
struggling to find the time?
lacking the correct tools?
struggling to find a reliable person?

Mickleham based
07939 131593
help@toolboxtony.co.uk

see toolboxtony.co.uk for more information on services offered

Mickleham & Westhumble Local History Group
Walking Tour of Little Bookham Street

3.30 - 5 pm Tuesday 24th September



Come and hear about the historic buildings on Little Bookham Street

Places limited to 15, booking essential

For further details or to book, please contact
judith.long2@btinternet.com or 07904 160961



Mole Valley
5th – 16th September

THIS YEAR'S THEME

CONNECTIONS, ROUTES & NETWORKS
Events at St Michael's Church, Mickleham
Saturday 14th September 10 am - 4 pm

Churchyard Connections with Nature

The parish has appointed an Eco group to look at ways in which we can connect with and protect nature around us. With the help of a dedicated team of volunteers much has been achieved. Join us to walk through the long grass, see the seasonal pond and the orchard as well as the hedgerows that have all been planted to encourage local flora and fauna, or simply sit and enjoy the peace, much as J. M. W. Turner did when he painted the church. Inside you can explore the history of a building that dates from Norman times as well as enjoying homemade cakes and refreshments.

Mickleham & Westhumble Local History Group Exhibition

The A24: Mickleham's Old London Road and the Mickleham Bypass

For centuries travellers to and from Dorking and beyond passed through Mickleham in the Mole Gap. This display features photographs and maps for this route before and after the building of the bypass in 1937. By the early 1930s traffic through the tiny village of Mickleham had become very congested and the decision was made to build a bypass – one of the first in the country. Several schemes were proposed. Work involved the acquisition of land (including the village's cricket ground), filling in a large swallow hole, new roads and bridges. The display will include the local history group's archive of documents and illustrations of the road and its users throughout the years including accounts of the time when the Mickleham Bypass became a huge 'car park' to store equipment and vehicles in preparation for D-Day.



The newly completed Mickleham Bypass looking south towards the Burford Bridge roundabout. Photograph by Ernest Fitter, Anne Weaver's father.

Editor: A plea for donations of strong carrier bags used to deliver the magazine. They are in very short supply at present. Please leave at St Anthony in Pilgrims Way. Thank you.

CARPET REVIVAL **REVIVING CARPETS & UPHOLSTERY IN SURREY**
Covering Dorking and all surrounding areas

We clean to a professional standard using eco-friendly chemicals and the latest equipment.
Offering a thorough survey, clean and customer satisfaction. Certified and insured.

Call 01306 740035 / 07747 122128
 or visit www.carpetrevival.co.uk
 to book a free home visit/quotation

Quote Code 'CR110' and save 10% off your booking

STEVE LAWRENCE
PLUMBING HEATING ELECTRICS
 Boiler installation, maintenance and repair

Based in Mickleham Local references
 30+ years' experience

07760 266718
stevenlaw37@hotmail.com



Vivien Cresswell
 Made-to-measure Soft Furnishings
 Curtains Roman Blinds Cushions

Extensive range of fabrics

01737 843858
info@cresswellcurtains.co.uk
www.vivien-cresswell.co.uk




Joseph De Decorators

- Painting • Decorating
- Wallpapering • Plastering • Tiling

Mickleham based
 40 years' experience

01372 372331 07973 358 932

Domestic Appliance Repairs
 30 years' experience repairing and installing all gas and electric domestic appliances



- Cookers, Microwaves
- Dishwashers
- Washing machines
- Fridges / Freezers
- Water coolers
- Coffee machines
- Tumble dryers

Contact: Andy 07895 719 706
andy@kirksdomestics.co.uk



PAINTING DECORATING

ANDREW CLARK 07800 796 737

INTERIOR & EXTERIOR • CARPENTRY • HANDYMAN




WATERCOLOUR PAINTINGS

- Do you have someone who is difficult to buy for? A pet portrait is ideal
- For weddings, a picture of the venue for invitations and orders of service
- Special cards for birthdays, baby announcements and other occasions.

Each one sketched from a photograph Prices start at £20

@philippahutter philippa@hutter.co.uk

Mickleham Cricket Club versus the Mandarins 28th July

2024 MCC team pre-match versus Temple Sheen

We made an early breakthrough, as a Michel Nguyedam yorker castled the Mandarins opener. However, the Mandarins are all civil servants and it showed, with their two and three grinding their way to a solid 101 partnership that seemed to take as long as devising the Rwanda policy but was rather more effective. One then retired and we got the other out, which triggered a mini collapse due to the bowling of Amy Jones, Ollie Winters and Archie Armitage and the catching of our youngsters. Mrs P deems it unnecessary to record catchers' names, so if you want your name in the book you have to write it in yourself when she is not looking, and I can't tell you who the catchers were except they were very good.

Unfortunately, it was too little too late, and the Mandarins made it to 194. Tidy keeping by Ali Pritchett, who then bowled as well. Ah, the energy of youth. Our youth policy is definitely paying off however, as we had no fewer than eleven bowlers, five of whom were aged under fifteen.



We started well, with Justin Turner retiring at 53*. Our cohort of youth are better bowlers than batters right now however, and the middle order didn't really click against a very good bowler in the Shoaib Bashir mould. He took 4/10, and only Ollie got into double figures. By the time your correspondent went in we needed nine an over. A mix up (traditional for MCC captains) led to Amy being run out. Liability is denied. Justin then lost his head and bails when we were cruising to victory, needing a mere seventy off the last four overs.

It was a game played in an excellent spirit on a rare warm sunny day. This is what village cricket is all about. The

crowd numbered at least seven, two of which were labradors and one, Bernard (that's one of the crowd, not one of the labradors) was celebrating his 89th birthday! The tea lady even produced a cake and candle. Thank you, Annie. Many thanks also to Box Hill School for preparing an excellent wicket even when one of the groundsmen is in hospital. We wish John (aka Savo) a speedy recovery.

Will Dennis
 Editor's note: In addition to this most recent report, we received two others courtesy of Chris Presley and Kevin Walker. MCC versus Temple Sheen on 23rd June was a win, versus Newdigate on 30th June was a loss.

WORLD'S BIGGEST COFFEE MORNING



Friday 20th September
Macmillan Coffee Morning
 10 am - 1 pm
 Chapel Farm, Westhumble, RH5 6AY

MACMILLAN CANCER SUPPORT

Coffee morning host, Liz Absalom wanted to add a few words.

You are invited to our annual coffee morning in aid of Macmillan Cancer Support. Please come along, bring some friends, have a cuppa and cake, enjoy the gardens, and say hello to the animals. There will be lots of treats to eat and take aways available for the weekend. I will once again be baking apple tarts and swapping these for a donation on the day. Be warned - they sell out quickly! If you haven't been

before it will be lovely to welcome you to Chapel Farm. If you support us regularly, thank you, and I look forward to welcoming you back to the farm.

We raised an amazing £1,874 last year and we would love to continue supporting this wonderful charity. It is a poignant year for our family as we lost my brother earlier in the summer and this coffee morning will be dedicated to his memory. We all know someone who has been supported by Macmillan and it's great to be able to continue raising funds for them while catching up with

friends. If you are unable to come along on the day and wish to support the event there is a link to a donation page below for this coffee morning.

Thank you to my lovely friends, family and neighbours for your support. I look forward to seeing you next month.

With love,
 Liz

'phone 07801 791123
https://macmillan-email.org.uk/c/AQjU9QEQ_bfpBhjUvr2NASCGr-udAdn-TC5FORnvxkbJIHRKJqjk_jXVS1DSiymgs6Rvime

Save the Date



Dorking Group of Artists have their free October Exhibition at Denbies Wine Estate, London Road RH5 6AA on Friday 25th and Saturday 26th October 10 am - 5 pm and Sunday 27th October 10 am - 4 pm.
 For information visit their [website www.dga.org.uk](http://www.dga.org.uk) or email Angela Hall (Chair) committeedga@gmail.com

When considering selling or buying;
a personalised property service for clients

Tim Garbett and his team are based in the Home Counties and Central London, handling a variety of clients & properties.

'Embarking on a sale or purchase is a major commitment and we ensure a client's property journey is tailor made to their requirements and for us to advise and navigate in an ever changing property market.'



Garbett & Partners

Please contact our team
tim@garbett.partners 07831 576616
sam@garbett.partners 07979 876380
www.garbett.partners
timgarbettgp

Phil's Mowing Dorking

- Regular Lawn Mowing
- General Garden Maintenance
- Lawn Care & turfing
- Hedge Trimming
- Pressure Washing



phil@philsmowingdorking.co.uk
07905 160 765

Building Plans

For home improvements & extensions
Including planning & building regulations
Fast efficient service at competitive rates

MICHAEL LLOYD CEng MICE

For free consultation:
Phone: 01483 205479 or 07958 791 402
mfl_uk@yahoo.co.uk

Get IT Fixed, Get IT Connected

Expert Repair & Maintenance



Brockham based. No call out charges. Fully transparent quotations with no hidden costs. We make technology work for you.

Call us now on
01737 845980

ChalkHill Systems
www.chalkhillsystems.co.uk



Extensions and alterations often require a
Structural Engineer

Robert Wynter & Partners Ltd

01306 879875

Book House, Vincent Lane
Dorking RH4 3HW
www.rwpltd.com

remedial roofing

For people with roof issues and deficiencies

- New roofs – slate & tiled roof specialists
- All roof repairs, moss removal & gutter clearance
- Flat roofs, traditional felt & GRP fibreglass
- New uPVC Fascia, soffit & guttering

Obtain an up-to-date report of remedial roofing on www.checkatrade.com



ALL WORK GUARANTEED
Call us today for a FREE quotation on:
01306 304736 | 07852 833802
info@remedialroofing.co.uk www.remedialroofing.co.uk



Summer Time at the Nursery

How lovely to finally have a summer, and great for our children and families that it has arrived in the holidays too. Entertaining children is so much easier when you can rely on using the great outdoors as your play space.

In the final weeks of nursery, children enjoyed lots of water play, we held our Olympics sports day, and entertained parents with our end of term show 'Jack and the Beanstalk'. We didn't use one of our own racing hens for the golden eggs, but we did have a magic growing beanstalk! The annual delight of seeing children's faces as we lifted the potatoes that we had planted and looked after was also magical. We cook our lifted treasures for the leavers' party meal and they are always very much enjoyed.

Our forest schoolers also had the

opportunity to use some of the charcoal they had made by stripping the bark off willow twigs and 'cooking' the twigs in a charcoal-making tin (golden syrup tin with holes in the lid) in the forest school fire pit. On the final forest school session, rather than go to the woods, they took their homemade charcoal and clipboards and drew pictures of the church while shaded in the shadows cast by the building and trees. What a serene place to enjoy a sunny afternoon.

Our new term starts with a playdate for all starters and their parents and then we gradually induct the new children into nursery school. Our younger children from last year are suddenly big, quite expert at the rules and routines of nursery and so the nursery cycle begins again!

Hilary Budd



Westhumble Bonfire and Fireworks

Saturday 9th November in Westhumble Field

Lots of new helpers needed. Learn bonfire-building skills from the more experienced members of the team. Ensure that this very popular community event can continue. Everyone is welcome for any amount of time. Refreshments will be available.

Bring wellies and thick gloves.

Saturday 12th October from 10 am Sunday 13th October from 2 pm

Saturday 19th October from 10 am Sunday 20th October from 2 pm

Finishing touches as required in the weekends that follow

Torchlight procession at 5.30 pm

from junction of Burney Road, Chapel Lane and Adlers Lane

All from Mickleham & Westhumble welcome along with relatives and friends. The charge per person can be kept down if more people attend. We are asking for donations of £8 per head including children, in cash, at the entrance to the field.

Barbecue food will be available for a small donation.



Please bring material for the bonfire to the site, BUT NOT BEFORE 12th October. No yew wood or timber with screws or nails, as these are dangerous to animals. No rubbish please. Ideally, sections of wood or branches, as opposed to piles of greenery and leaf clippings.



Please remember that a bonfire is a dangerous place even before it is lit, so keep small children and pets under supervision.

Come and visit Silvermere Softplay Centre, where the joy and benefits of play are exceeded!

Situated in the heart of Dorking's Meadowbank Park, Silvermere's newly established softplay centre is an accessible and inclusive space for children and young people to unleash their natural energy through movement, play, and connection with others. We offer soft play sessions; pre-school play and parties. Our aim is for Silvermere Softplay to become a thriving hub for the community, where everyone – young and old – feels welcome. Later this year, we will be introducing structured movement-based groups to enhance wellbeing and connection for adults, as well as for children and young people.



Meadowbank, Dorking RH4 1DX

Our warm and welcoming café – serving a delicious range of homemade, locally-sourced food and drinks – is the perfect space for everyone, including well-behaved pooches, to relax and connect.

For more info and booking: www.silvermere-softplay.co.uk
Proprietors: Katie and Michael of School Lane, Mickleham



Mickleham Village Hall, Dell Close

Weekdays 9.15 am - 2.45 pm (term time)

Mornings only or longer sessions available

Cosy preschool nursery • Superb garden and forest school
We offer an excellent range of pre-school activities for 2-to 5-year-olds, where children can learn through play in an informal, well-resourced, friendly atmosphere.

Contact us for more information about admissions
01372 361021 www.stmichaelscommunitynursery.co.uk

Suitable items for the foodbank collection

Tinned veg / tomatoes / soup / sauces / baked beans
Powdered milk / UHT milk (green and blue only)
Rice pudding / long life sponge puddings
Coffee / tea bags / long life fruit juice
Pasta / rice / pulses / instant mash
Jam / honey / marmalade / spreads
Sugar (500g bags only)

Washing-up and cleaning products
Tissues / paper towels / tampons
Men's / women's toiletries
Laundry products
Nappies
Pet food



Please do not include out-of-date items or those that require refrigeration

LOCAL FOOD BANK COLLECTION POINTS

MICKLEHAM
Garden Corner off Old London Road
Mary Banfield 01372 373912

WESTHUMBLE
St Anthony, Pilgrims Way
Sue Tatham 01306 882547

Or St Michael's Church on Sunday mornings

Spirituality and Hope

Towards the end of the summer term, we visited Gatton Park for our whole school trip. This was thoroughly enjoyed by all. After an uncertain start due to the diesel spillage creating havoc on the roads, we were only fifteen minutes behind schedule! Unfortunately, the weather was not on our side but we did manage to avoid the worst of the rain until the last twenty minutes. This did not dampen our spirits though.

The children enjoyed touring the Japanese garden, creating artwork and they had lots of fun in the forest area, den building, decorating trees, using magnifying glasses to explore

mini-beasts, and making clay faces on trees. Topped off by a 'round the fire' singsong.

These experiences in nature, away from the day-to-day timetable, support young children developing and engaging with their own spirituality. We observed the children's sense of awe and wonder when taking part in activities they had chosen. The children were inquisitive and curious and talked about things they had noticed and by which they were fascinated. They showed a sense of delight in finding various mini-beasts and how their habitats were protecting them. These

kinds of opportunities are so valuable to young children's sense of self, others and beyond. At St Michael's we have developed this poster which we recently shared with the children. It helps them to understand the concept of spirituality.

We ended the academic year with a wonderful church service. We were very lucky with the weather and having so many families join us. The service was 'singing our way to the summer' and the children's efforts were appreciated. It was a joyful way to send the children off for the summer break.

It was also heartening to listen to our Year 2 leavers speak with such wisdom and clarity when reading



St Michael's School

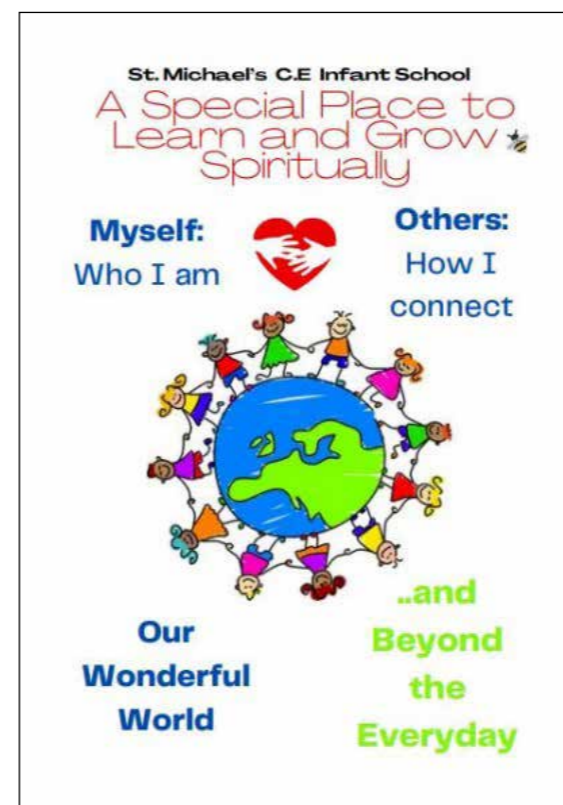
stmichaels-dorking.surrey.sch.uk

prayers about our values. Year 2 have certainly lived out these values in their time at St Michael's. The focus this year on courageous advocacy and the development of our Eco Team has encouraged the children to think more deeply about the needs of others. All the children have given their time (litter picking), raising money and awareness for Water Aid and Child Bereavement UK, showing they are able to give back.

Our value for the last half term was 'Hope' and our sincerest hope is for our Year 2 leavers to take those values with them and use what they have learned to help guide their choices and relationships as they begin a new chapter.

We have watched all the children learn and grow. We can see that they are ready for the next phase in their learning, which is always our aim. To mark their time at St Michael's, the children were presented with a personalised Bible at the Leavers' Assembly. We hope they remember us when they read the stories and that they carry the Christian values with them on their new journey.

A huge thank you to St Michael's church and the Friends of St Michael's for funding the Bibles. Adnana Travers



A series of recitals in St Michael's Church by talented local musicians and their friends

Sundays at Six

29th September

New Discoveries

Piano Duo Tracy and Caroline

In aid of Sheldrick Wildlife Foundation
Come along at six o'clock on a Sunday evening and enjoy lovely music in the tranquil surroundings of our ancient parish church.
No ticket needed – retiring collection.



The children's harvest craft workshop will be at 10 am at St Michael's Church on Sunday 6th October, preceding the Harvest Service at 11 am. There will be wine and finger food after the service. All are welcome.



Fun-fuelled holiday activity days

at High Ashurst, Mickleham for 6-13 year olds

Book now!



www.surreyoutdoorlearning.uk

Word Search - Cats and Dogs

The theme of this word search is 'Cats and Dogs'. There are 28 words or phrases hidden in the grid. Can you find them? NB Spaces between words are omitted in the grid.

Balls, Black Labrador, Cat Basket, Catnip, Dog Show, Fleas, Furballs, Ginger, Kennel, Kittens, Lead, Manx, Moggie, Muddy Puddles, Paws, Pedigree, Poo-bag, Pooch, Pug, Siamese, Sledge Dog Racing, Sticks, Stud, Tails, Tom, Vet, Walkies, Whiskers

Barbara Jones

G E W E T W H I S K E R S A H
 N B I J S E I K L A W X N C Y
 I R M G Z E V E L E N N E K I
 C L S E G T M K V P I N T A C
 A F D E K O P A M Y O E T P M
 R T B R W O M A I Y K W I G U
 G I N G E R N L W S G O K B D
 O S Y I P X A B A S U H S W D
 D L Q D A E L B T H G S L T Y
 E L O E W X T I O K C G G U P
 G A D P S A C H M F T O P J U
 D B L A C K L A B R A D O R D
 E R C X S L L A B P U P S P D
 L U G A B O O P L T D Y R C E
 S F L E A S E L S L I A T S S

Photo by David Kennington



Harebells on 5th August St Michael's Churchyard

This poem was sent in by Barbara Perkins. She says it is a piece of writing she has always enjoyed and hopes others may too.

What's in a smile?

A smile costs nothing, but gives much. It enriches those who receive, without making poorer those who give. It takes but a moment, yet the memory of it may last forever.

A smile creates happiness in the home, fosters goodwill in business, and is the sign of friendship. It brings rest to the weary, cheer to the discouraged, sunshine to the sad, and is nature's best antidote to trouble.

Yet a smile cannot be bought, begged, borrowed or stolen; for it is something of no value to anyone, unless it is given away.

Some people are too tired to give you a smile.

Give them one of yours.

No-one needs a smile so much as he who has none to give.

Anonymous

Just Desserts Solution

Sue Tatham



- | | |
|--------------------|-------------------------|
| 1. MOUSSE | 15. SORBET |
| 2. BROWNIE | 16. RASPBERRY TART |
| 3. UPSIDEDOWN CAKE | 17. KNICKERBOCKER GLORY |
| 4. TRIFLE | 18. BAKED ALASKA |
| 5. ETON MESS | 19. TIRAMISU |
| 6. CUSTARD | 20. GOOSEBERRY FOOL |
| 7. PAVLOVA | 21. SYLLABUB |
| 8. SAGO PUDDING | 22. BAKEWELL TART |
| 9. APPLE PIE | 23. PANNA COTTA |
| 10. SPOTTED DICK | 24. CHEESECAKE |
| 11. BANANA SPLIT | 25. RHUBARB CRUMBLE |
| 12. MERANGUE | 26. ICE CREAM |
| 13. CRÈME CARAMEL | 27. BANOFEE PIE |
| 14. BAKLAVA | 28. PLUM COBBLER |

Need help with your accounts?

Running a business needs time and energy – don't waste your time working on your accounts when you can work on your business instead!

At a4c we provide fixed fee accountancy solutions with friendly support throughout the year. Services include accounts, tax returns, VAT, payroll, book-keeping etc.

Friendly approachable and local to Dorking – we enjoy getting to know our clients so call us today for a no obligation chat.

We LOVE numbers so YOU don't have to!
01737 652852
 esther@a4cgroup.co.uk
 www.a4cgroup.co.uk



Helping older people to live well in their own homes since 2010



- Award winning care
- Companionship services
- Home help services
- Personal care services
- Highly trained Care Professionals

If someone in your family needs a little help please contact us on

01372 741544

www.homeinstead.co.uk/epsom
 Email: simon.burrowes@homeinstead.co.uk



Each Home Instead franchise is independently owned and operated. Copyright © Home Instead® 2022.



EST ——— *The* ——— XVI
• RUNNING HORSES •

You are sure of a warm welcome at this historic 16th century inn.

Join us daily for lunch and dinner, and on a Sunday bring the whole family to us for our delicious home-cooked roast dinner.

We have eight feature rooms, each named after a different racecourse.

OPENING HOURS
 Monday – Sunday 12 noon – 11 pm

Old London Road, Mickleham
 Dorking RH5 6DU

01372 388422

bookings@therunninghorses.co.uk

npd
 REFURBISHMENTS

Bathrooms • Plastering • Tiling • Kitchens



We can offer specialist services or complete project management including inspirational design ideas. No job is too big or too small.

What you can expect from NPD Refurbishments:

- Close attention to detail and true craftsmanship with trusted testimonials
- Use of high-quality materials yet working with suppliers to obtain the best possible prices
- Use qualified and reliable contractors where necessary
- Unlimited options and flexibility to allow changes throughout the building process
- Help and advice in selecting amenities and options you will be happy with
- Constant communication to keep aware of project status
- Down to earth approach but high level of workmanship
- A tidy job environment to minimise disruption
- An open, comprehensive and honest quote

01403 738103

07917 457286

npdrefurbishments.com



**RESIDENTIAL • COMMERCIAL
AGRICULTURAL • SCHOOLS • ACOUSTIC
HOARDING • GATES • SECURITY**

**RICHARDSON & BRADS FENCING LTD
T: 01306 640 143 - 01483 414 745**

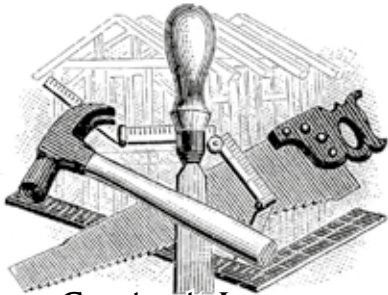
E: INFO@RBFENCINGLTD.CO.UK
W: WWW.RBFENCINGLTD.CO.UK

A: 168 SOUTH STREET, DORKING, SURREY, RH4 2ES

J S Wilson

Mickleham

Carpentry & Building Services



Extensions ~ Conversions
Refurbishments ~ Property Maintenance
Fully guaranteed ~ Fully insured

One call WILL solve it all

Contact Jason on: 07761 926684 or 01372 379359
info@jasonswilson.co.uk



Tracey's
sewing room

where beautiful things come
together one stitch at a time

We are now open in Dorking

Haberdashery & Fabrics
Sewing workshops
Alterations

Bespoke dress making
Blinds, cushions & curtains

Visit us at No 1 North Street

tracey@traceyssewingroom.co.uk 07511079441
www.traceyssewingroom.co.uk

Treeline Services Ltd

**YOUR LOCAL PROFESSIONAL
TREE HEALTH CARE SPECIALISTS**

Felling • Pruning • Stump Removal • Planting
Woodchip • Air Spade Services • Consultancy

Call us on 01306 741800

office@treeline.co.uk • www.treeline.co.uk



**WELL-SEASONED LOGS
FREE LOCAL DELIVERY**